

LEGEND

- DUX-AD ⊕ GROUNDWATER MONITORING WELL
- SG-1 ⊕ SOIL/GAS MONITORING PROBE
- SUR-1\SED-1 ▲ SURFACE WATER SAMPLING LOCATION
- PROPERTY LINE (APPROX.)
- 311.8 PFAS 6 CONCENTRATION IN NG/L
SEE PFAS CONCENTRATION KEY FOR HIGHLIGHTING
- 64.60 TOTAL WELL DEPTH IN FEET
- ⊕ PUBLIC WATER SUPPLY WELL
- MASSDEP ZONE 1

PFAS CONCENTRATION KEY

- ND PFAS NOT DETECTED
- PFAS PFAS DETECTED < 10 NG/L
- 11.00 10 NG/L ≤ PFAS < 20 NG/L
- 311.8 20 NG/L ≤ PFAS
- NS NO SAMPLE (NS) COLLECTED

NOTES

1. DUX-NS AND DUX-ND WERE NOT SURVEYED AS PART OF THE JUNE 2007 RE-SURVEY CONDUCTED BY WESTON & SAMPSON.
2. PFAS = PER- AND POLYFLUOROAKYL SUBSTANCES
3. PFAS 6 CONCENTRATIONS SHOWN ARE A SUM OF PERFLUORODECAHOIC ACID (PFDA), PERFLUOROHEPTANOIC ACID (PFHpA), PERFLUOROHEXANOIC ACID (PFHxA), PERFLUORONONANOIC ACID (PFNA), PERFLUOROCTANESULFONIC ACID (PFOS), AND PERFLUOROCTANOIC ACID (PFOA).
4. PROPERTY LINES, PUBLIC WATER SUPPLY WELLS, AND DEP APPROVED ZONE 1s ARE REFERENCED FROM THE MASSACHUSETTS OFFICE OF GEOGRAPHIC AND ENVIRONMENTAL INFORMATION (MASSGIS).

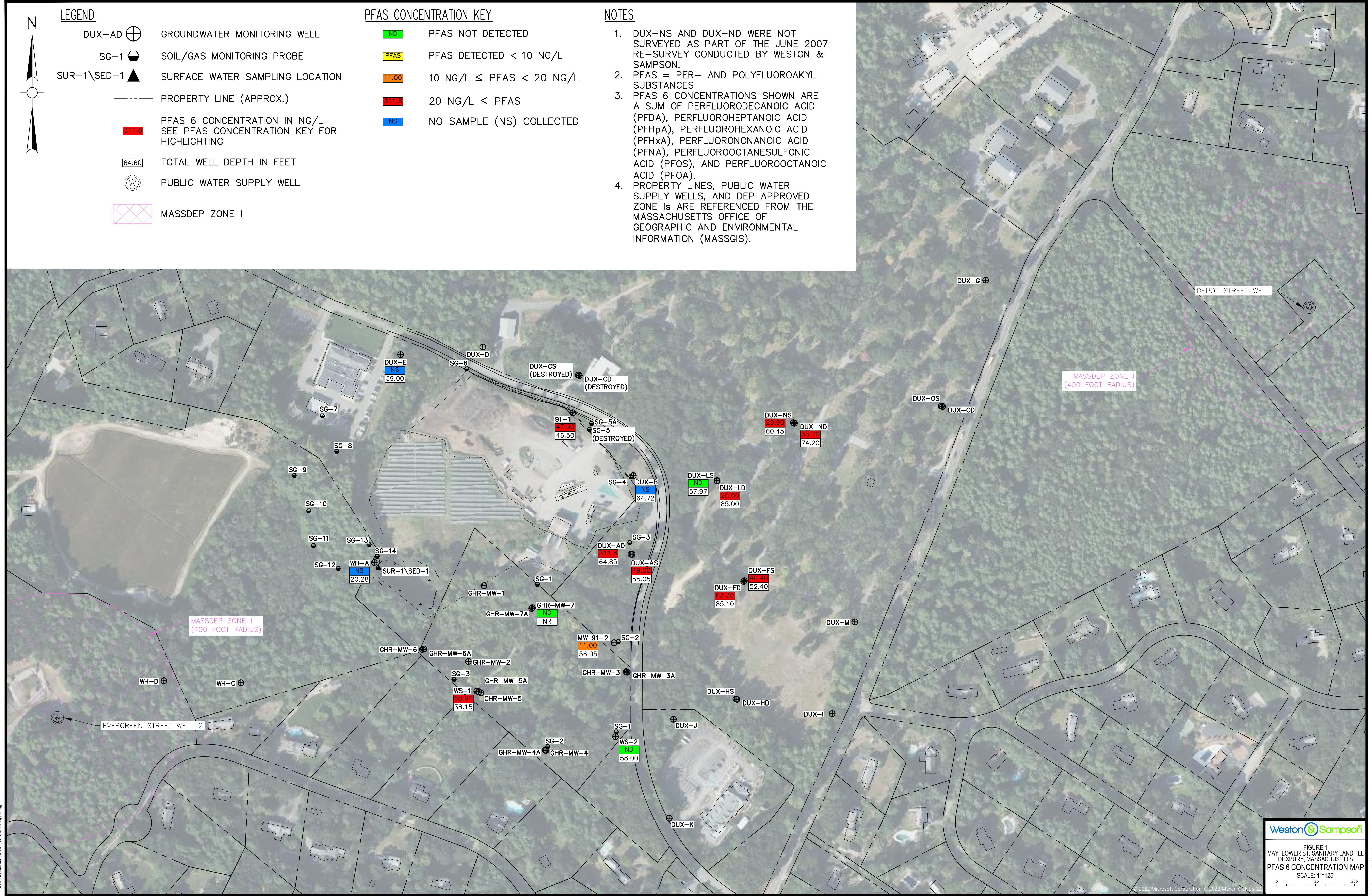


FIGURE 1
MAYFLOWER ST. SANITARY LANDFILL
DUXBURY, MASSACHUSETTS
PFAS 6 CONCENTRATION MAP
SCALE: 1"=125'